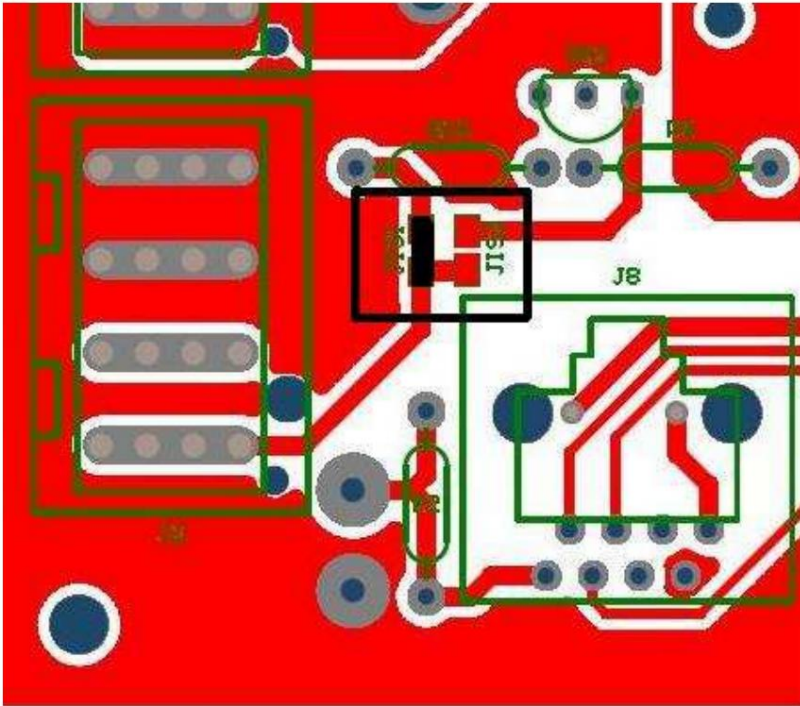


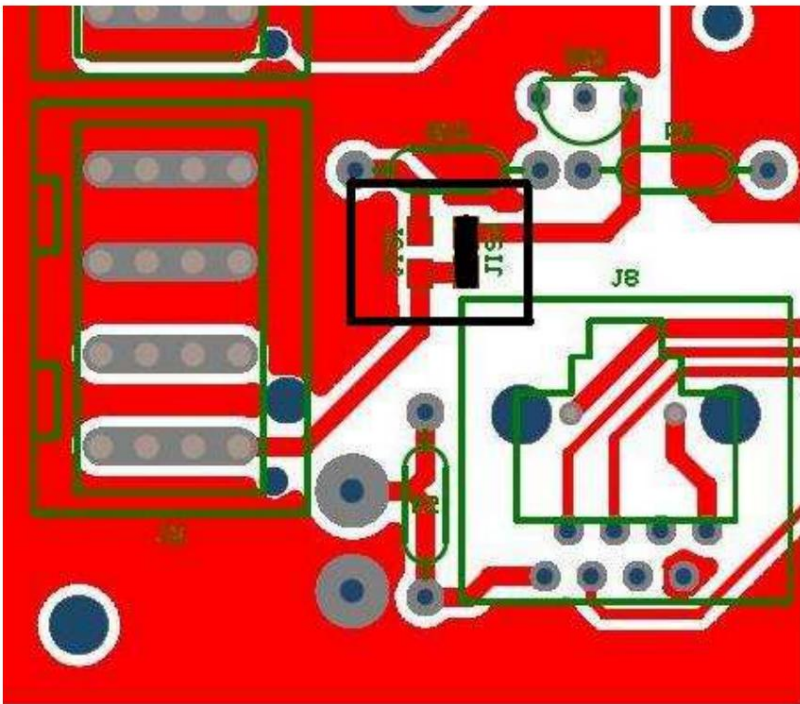
## D+ or D- setting on AL120NB

### D-Setting



Make a jumper on JIS1 and cut the JIS2 jumper (see black box in the image)

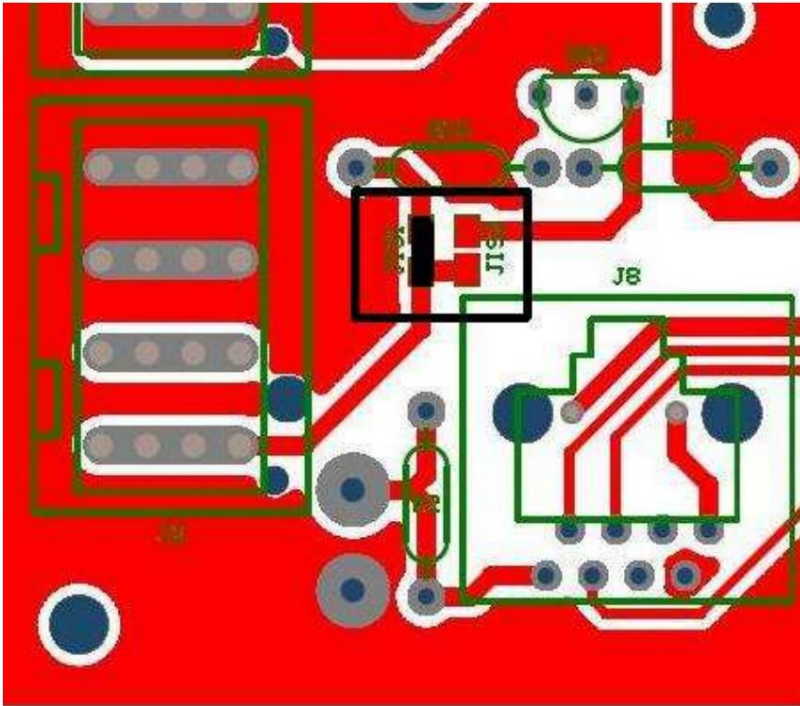
### D+ setting



Make a jumper on JIS2 and cut the JIS1 jumper (see black box in the image)

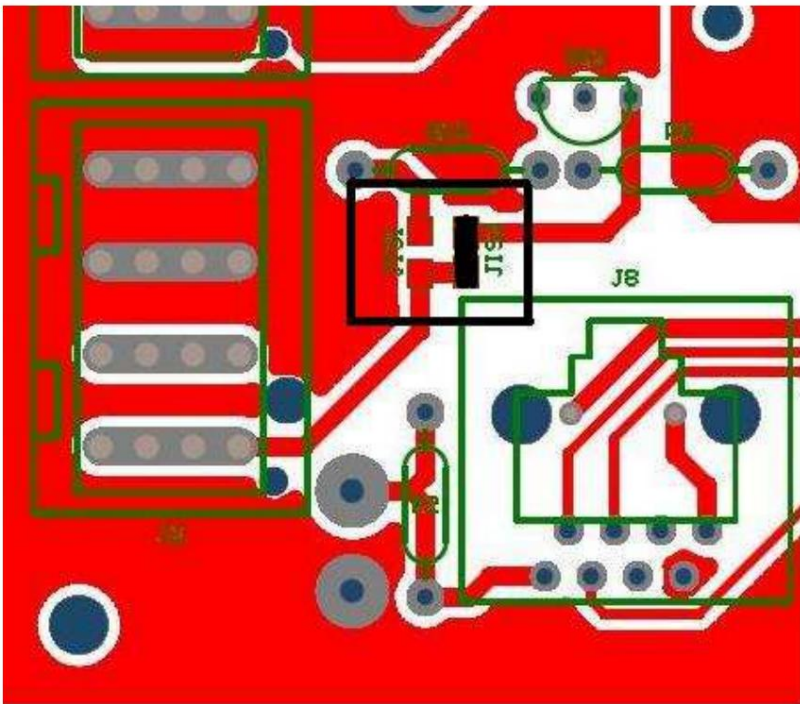
## D+ or D- Setting on AL120NB

### D-Setting



Make a jump on JIS1 and cut JIS2 (see black box on pictures)

### D+ Setting



Make a jump on JIS2 and cut JIS1 (see black box on pictures)