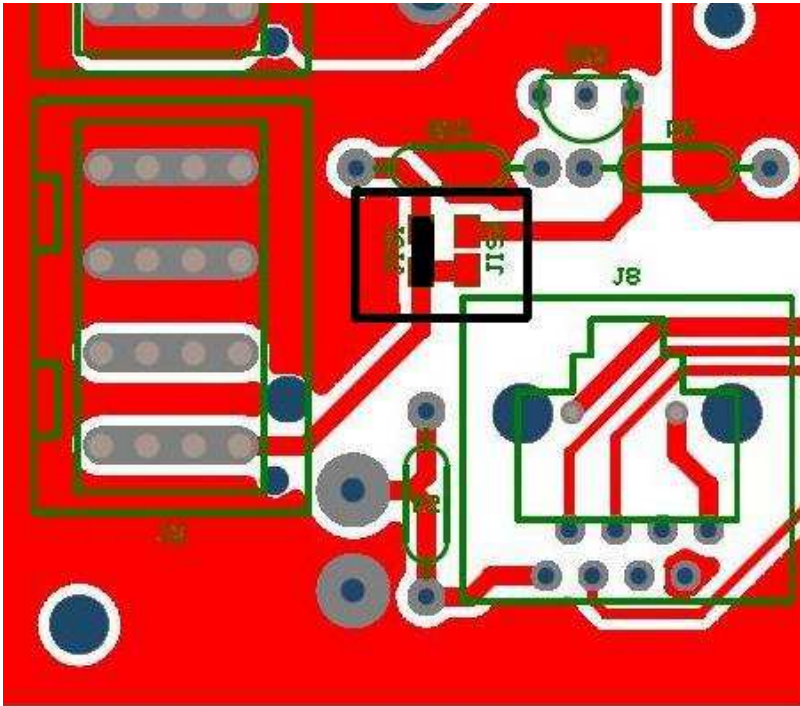


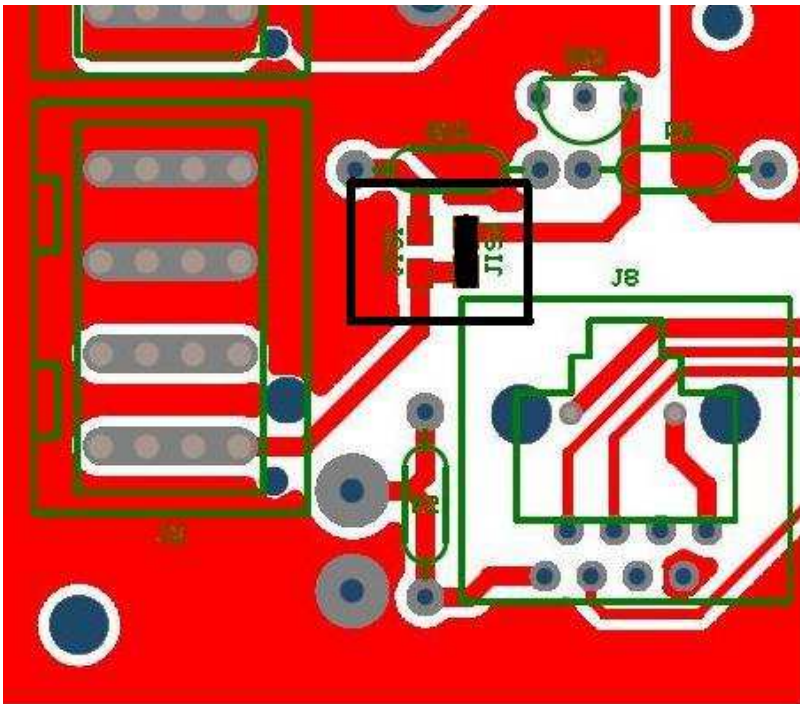
Impostazione D+ o D- su AL120NB

Impostazione D-



Fare ponticello su JIS1 e tagliare il ponticello JIS2 (vedi riquadro nero nell'immagine)

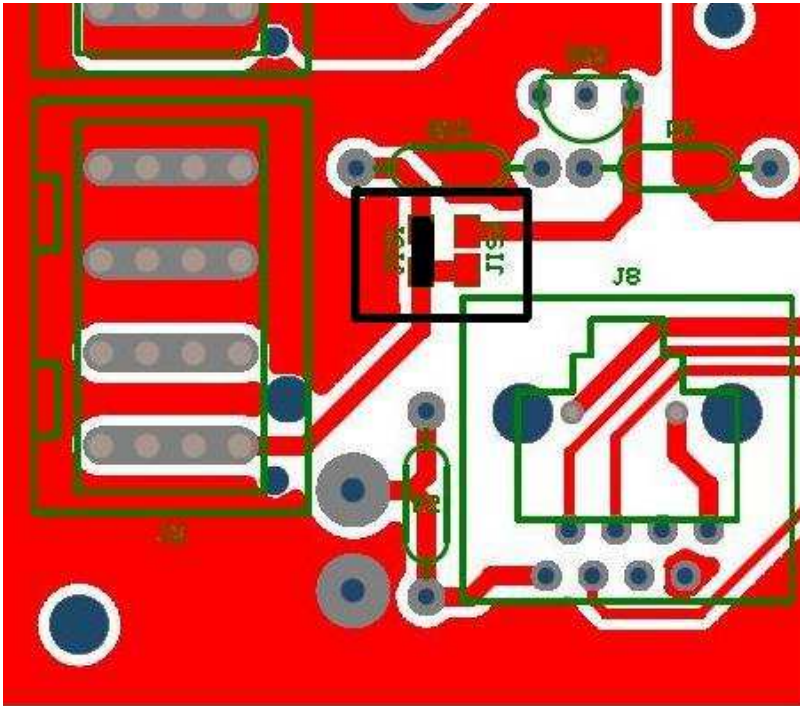
Impostazione D+



Fare ponticello su JIS2 e tagliare il ponticello JIS1 (vedi riquadro nero nell'immagine)

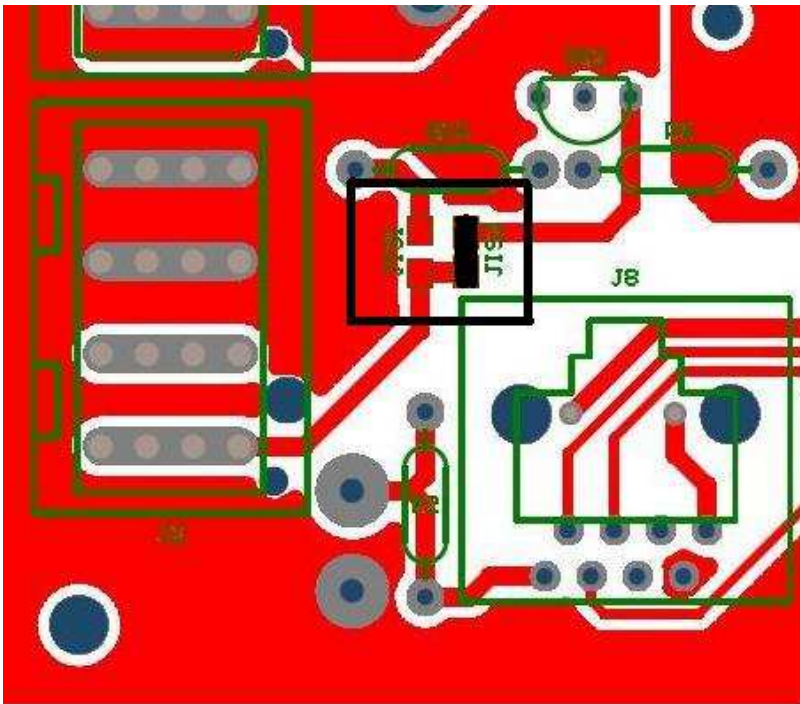
D+ or D- Setting on AL120NB

D- Setting



Make a jump on JIS1 and cut JIS2 (see black box on pictures)

D+ Setting



Make a jump on JIS2 and cut JIS1 (see black box on pictures)