



# Certificate Of Conformity

## for RoHS

Registration No.: GCT301804B604488C

Report No. : GCT301804B604488

Applicant : Shenzhen Marshine Industrial Co., Ltd  
 Address : M. Block B, GUBOU INDUSTRIAL PARK, GUANGMING DISTRICT, SHENZHEN CITY, 518107, GUANGDONG PROVINCE, CHINA

Manufacturer : Shenzhen Marshine Industrial Co., Ltd  
 Address : M. Block B, GUBOU INDUSTRIAL PARK, GUANGMING DISTRICT, SHENZHEN CITY, 518107, GUANGDONG PROVINCE, CHINA

Product : Fire extinguisher  
 Model No. : F03  
 Series No. : F01,F02,F04,F05,F06,F07,F08,SWDF-01,SWDF-02,SWDF-03,SWDC-01,SWDC-02,SWDC-03,SWDA-03,SWDA-04,SWDA-06

Test Method : IEC 62321-3-1:2013, IEC 62321-4:2013+AMD1:2017, IEC62321-5:2013, IEC 62321-6:2015, IEC62321-7-1:2015, IEC 62321-7-2:2017, IEC62321-8:2017.

The submitted products have been tested by us with the listed standards and found in compliance with the following European Directives:

EU RoHS Directive 2011/65/EU Annex II and amending Directive (EU) 2015/863 with effective from 22 July 2019 Restriction of the Use of Certain Hazardous Substances in Electrical and Electronic Equipment

The test results apply only to the particular sample tested and to the specific tests carried out. This verification applies specifically to the sample investigated in our test report number only.



Approved by:



Date of issue:



The CE marking may only be used if all relevant and effective EC directives are complied with.

SHENZHEN GCT TESTING CO., LTD.

ADDRESS: 401, NO.5, YONGAN FANG EAST, BAISHIXIA COMMUNITY, FUYONG STREET, BAQAN DISTRICT, SHENZHEN CITY, GUANGDONG PROVINCE, CHINA

TEL:+86-755-23012984 WEB:WWW.GCT-TESTING.COM E-MAIL:INFO@GCT-TESTING.COM

# Test Report

Report No.: GCT301804B604488

Date: April 22, 2026

Page 1 of 8

Applicant : Shenzhen Sandrine Industrial Co., Ltd  
Address : SF, Block B, GUNGU INDUSTRIAL PARK, SHUWOMING DISTRICT, SHENZHEN CITY, SHENZHEN, GUANGDONG PROVINCE, CHINA

Manufacturer : Shenzhen Sandrine Industrial Co., Ltd  
Address : SF, Block B, GUNGU INDUSTRIAL PARK, SHUWOMING DISTRICT, SHENZHEN CITY, SHENZHEN, GUANGDONG PROVINCE, CHINA

The submitted sample and sample information was/were submitted and identified by/on the behalf of the client.

Sample Name : Fire extinguisher  
Model No. : F03  
Series No. : F01,F02,F04,F05,F06,F07,F08,SWDF-01,SWDF-02,SWDF-03,SWDC-01,SWDC-02,SWDC-03,SWDA-03,SWDA-04,SWDA-06  
Sample Received Date : April 06, 2026  
Testing Period : April 15, 2026 – April 21, 2026

**Test Requested:**

As specified by client, to determine the Pb, Cd, Hg, Cr<sup>6+</sup>, PBBs, PBDEs, DIBP, DBP, BBP, DEHP content in the submitted sample in accordance with Directive 2011/65/EU (RoHS) and its amendment directive (EU) 2015/863.

**Conclusion**

Pass

Signed for and on behalf of  
Shenzhen GCT Testing Co., Ltd

Authorized Signatory



**Test Method**

(1) XRF screening limits for regulated elements according to IEC 62321-3-1:2013 (Unit: mg/kg)

Element	Polymers	Metals	Composite material
Pb	$BL \leq (700-3\sigma) < X < (1300+3\sigma) \leq OL$	$BL \leq (700-3\sigma) < X < (1300+3\sigma) \leq OL$	$BL \leq (500-3\sigma) < X < (1500+3\sigma) \leq OL$
Cd	$BL \leq (70-3\sigma) < X < (130+3\sigma) \leq OL$	$BL \leq (70-3\sigma) < X < (130+3\sigma) \leq OL$	$LOD < X < (150+3\sigma) \leq OL$
Hg	$BL \leq (700-3\sigma) < X < (1300+3\sigma) \leq OL$	$BL \leq (700-3\sigma) < X < (1300+3\sigma) \leq OL$	$BL \leq (500-3\sigma) < X < (1500+3\sigma) \leq OL$
Cr	$BL \leq (700-3\sigma) < X$	$BL \leq (700-3\sigma) < X$	$BL \leq (500-3\sigma) < X$
Br	$BL \leq (300-3\sigma) < X$	N/A	$BL \leq (250-3\sigma) < X$

(2) Chemical Test

Test Item	Test Method	Test Instrument	MDL (mg/kg)	EU RoHS Limit (mg/kg)
Lead (Pb)	IEC 62321-5:2013	ICP-OES	2	1000
Cadmium (Cd)	IEC 62321-5:2013	ICP-OES	2	100
Mercury (Hg)	IEC 62321-4:2013 +AMD1:2017	ICP-OES	2	1000
Hexavalent Chromium (Cr(VI))	IEC 62321-7-2:2017 (non-metal)	UV-Vis	8	1000
	IEC 62321-7-1:2015 (metal)	UV-Vis	0.1(μg/cm <sup>2</sup> )	/
Polybrominated Biphenyls (PBBs)	IEC 62321-6:2015	GC-MS	5	1000
Polybrominated Diphenyl Ethers (PBDEs)	IEC 62321-6:2015	GC-MS	5	1000
Phthalates(DBP, BBP, DEHP, DIBP)	IEC 62321-8:2017	GC-MS	50	1000

**Tested Material Description**

No.	Description	No.	Description
1	Red plastic	5	Black sponge sticker
2	Yellow dry powder	6	Red plastic wire sheath
3	White sponge sticker	7	Black rope
4	Silver aluminum foil paper		

**Tested Result**
**(1) Screening Result**

Tested Item(s)	Screening Result						
	1	2	3	4	5	6	7
Lead (Pb)	BL	BL	BL	BL	BL	BL	BL
Cadmium (Cd)	BL	BL	BL	BL	BL	BL	BL
Mercury (Hg)	BL	BL	BL	BL	BL	BL	BL
Total Chromium (Cr(VI))	BL	BL	BL	BL	BL	BL	BL
Total Bromine (PBBs & PBDEs)	BL	BL	BL	BL	BL	BL	BL

**(2) Test result for Chemical Confirmation**
**(a) The test result of Phthalates(DIBP, DBP, BBP, DEHP):**

Testing item	Result (mg/kg)		
	1	2	3+5
Diisobutyl phthalate(DIBP)	N.D	N.D	N.D
Dibutyl phthalate(DBP)	N.D	N.D	N.D
Benzylbutyl phthalate(BBP)	N.D	N.D	N.D
Di-2-ethylhexyl phthalate(DEHP)	N.D	N.D	N.D



# Test Report

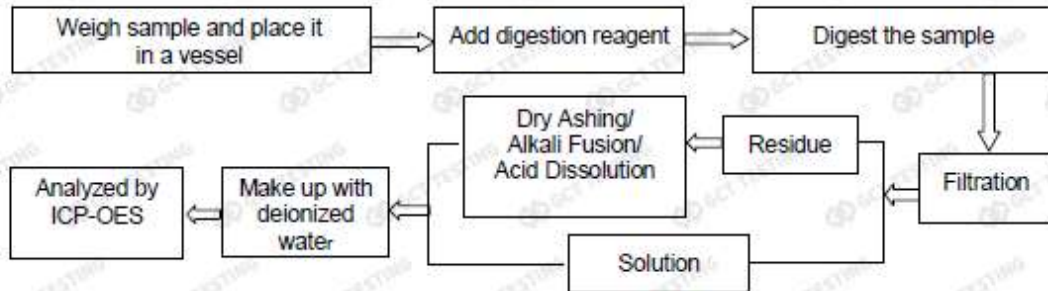
Testing item	Result (mg/kg)	
	6	7
Diisobutyl phthalate(DIBP)	241	N.D
Dibutyl phthalate(DBP)	N.D	249
Benzylbutyl phthalate(BBP)	N.D	N.D
Di-2-ethylhexyl phthalate(DEHP)	N.D	N.D

**Remark:** N.D. = Not Detected(<MDL or LOQ), MDL = Method Detection Limit  
 X = The range of needing to do further testing  
 BL = Below the screening limit, OL = Over the screening limit.  
 N/A= Not applicable  
 3σ= The reproducibility of analytical instruments  
 \* = The screened result was found and further chemical test  
 When conducting the test for PBBs&PBDEs, XRF was introduced to screen Br exclusively.  
 When conducting the test for Hexavalent Chromium, XRF was introduced to screen Chromium exclusively.  
 LOQ = Limit of Quantification, The LOQ of Hexavalent chromium is 0.10 µg/cm<sup>2</sup>  
 LOD= Detection limit  
 mg/kg = ppm = parts per million, 1000 mg/kg = 0.1%  
 The tested materials were specified and confirmed by the client.  
 All/part tests requested for testing require to have a statement of conformity, but the measurement uncertainty isn't required to be accounted for checking/compliance. Then decision rule section 4.2.1.Binary Statement for Simple Acceptance Rule as stated in ILAC-G8:09/2019 will be used.

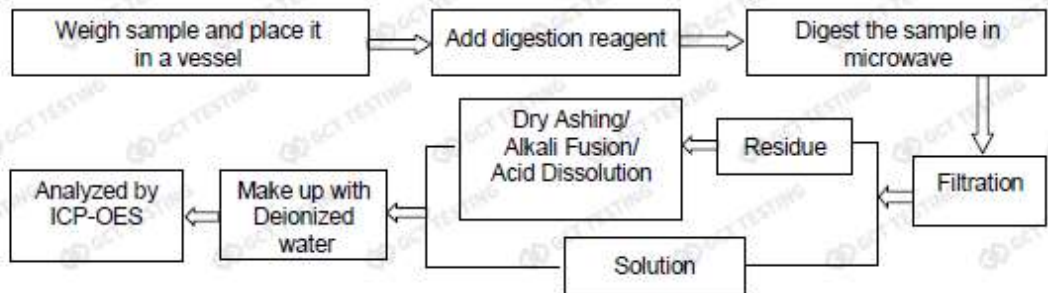
NG  
PR  
HE

**Test Process**

**1. Lead(Pb), Cadmium(Cd), Chromium(Cr)**

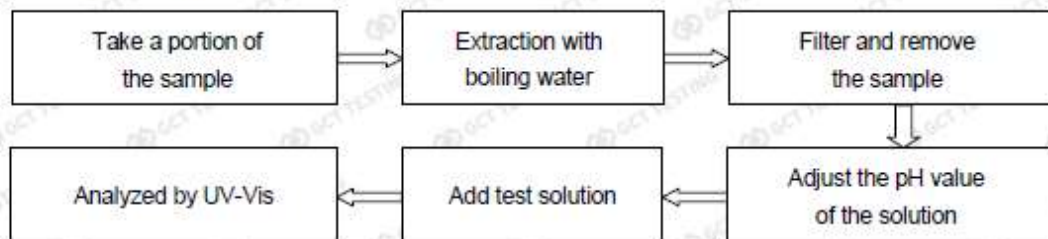


**2. Mercury(Hg)**

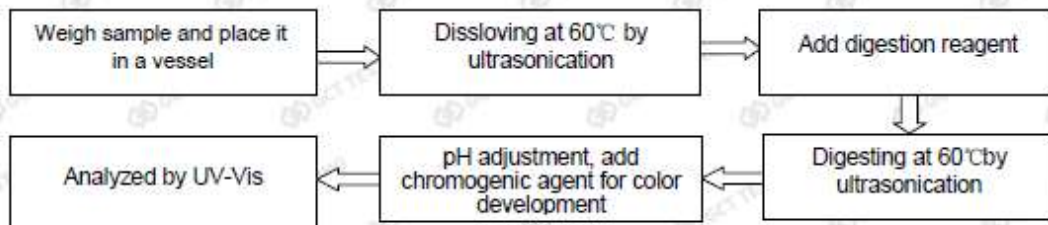


**3. Hexavalent Chromium (Cr (VI))**

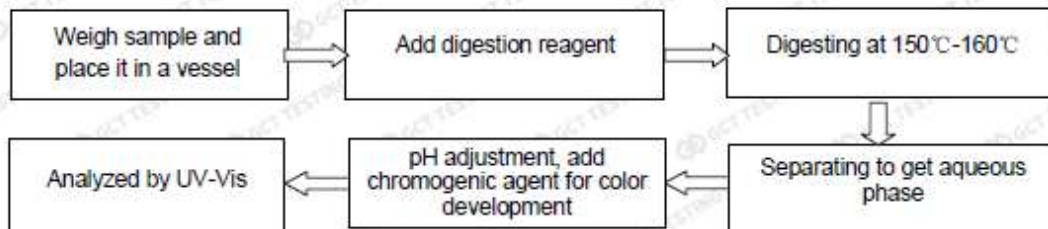
(1) IEC 62321-7-1:2015  
Plating/Metal sample(s)



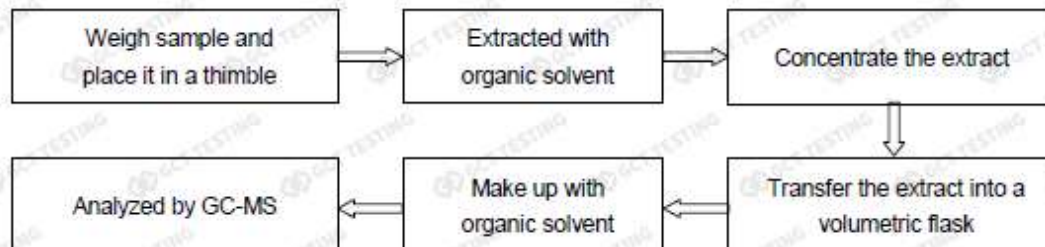
(2) IEC 62321-7-2:2017  
 Non-metal sample(s) (Material ABS/PC/PVC)



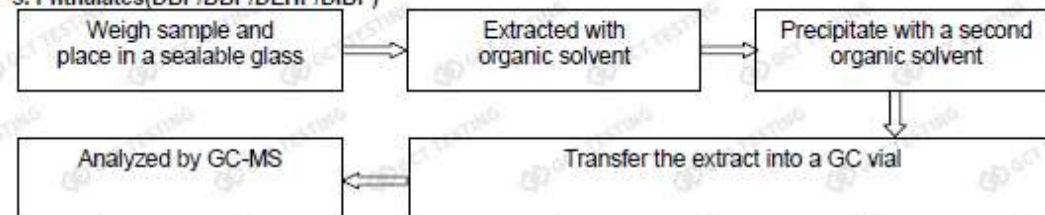
(3) IEC 62321-7-2:2017  
 Non-metal sample(s) (Others)



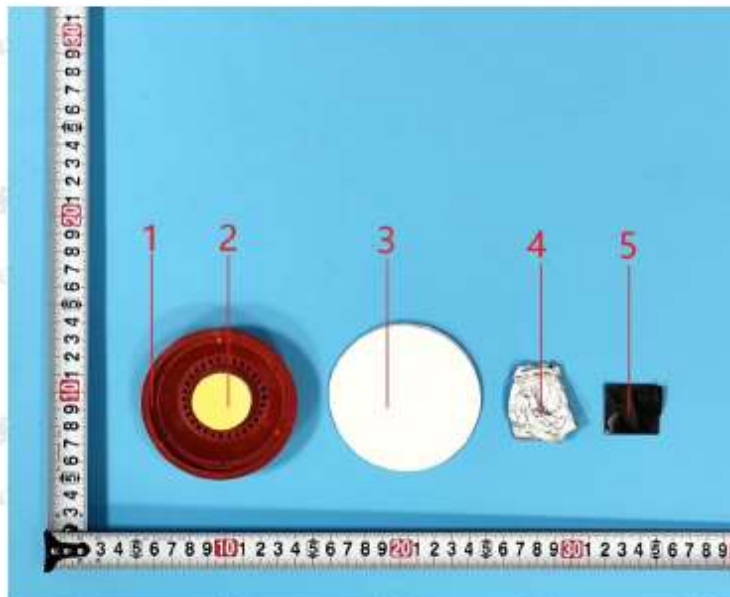
4. Polybrominated Biphenyls (PBBs), Polybrominated Diphenyl Ethers (PBDEs)



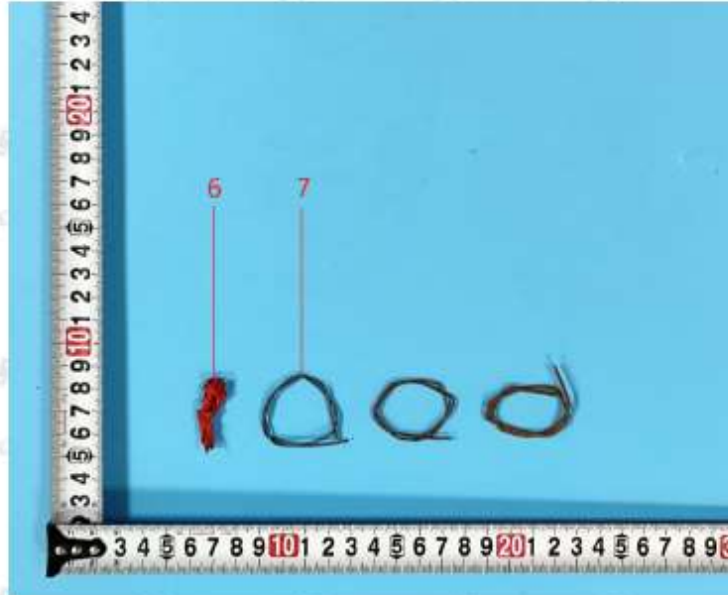
5. Phthalates (DBP/BBP/DEHP/DIBP)



### Photograph of Sample



Photograph of Sample



\*\*\*\*\* End of Report \*\*\*\*\*